

# RANGE 14F SOP

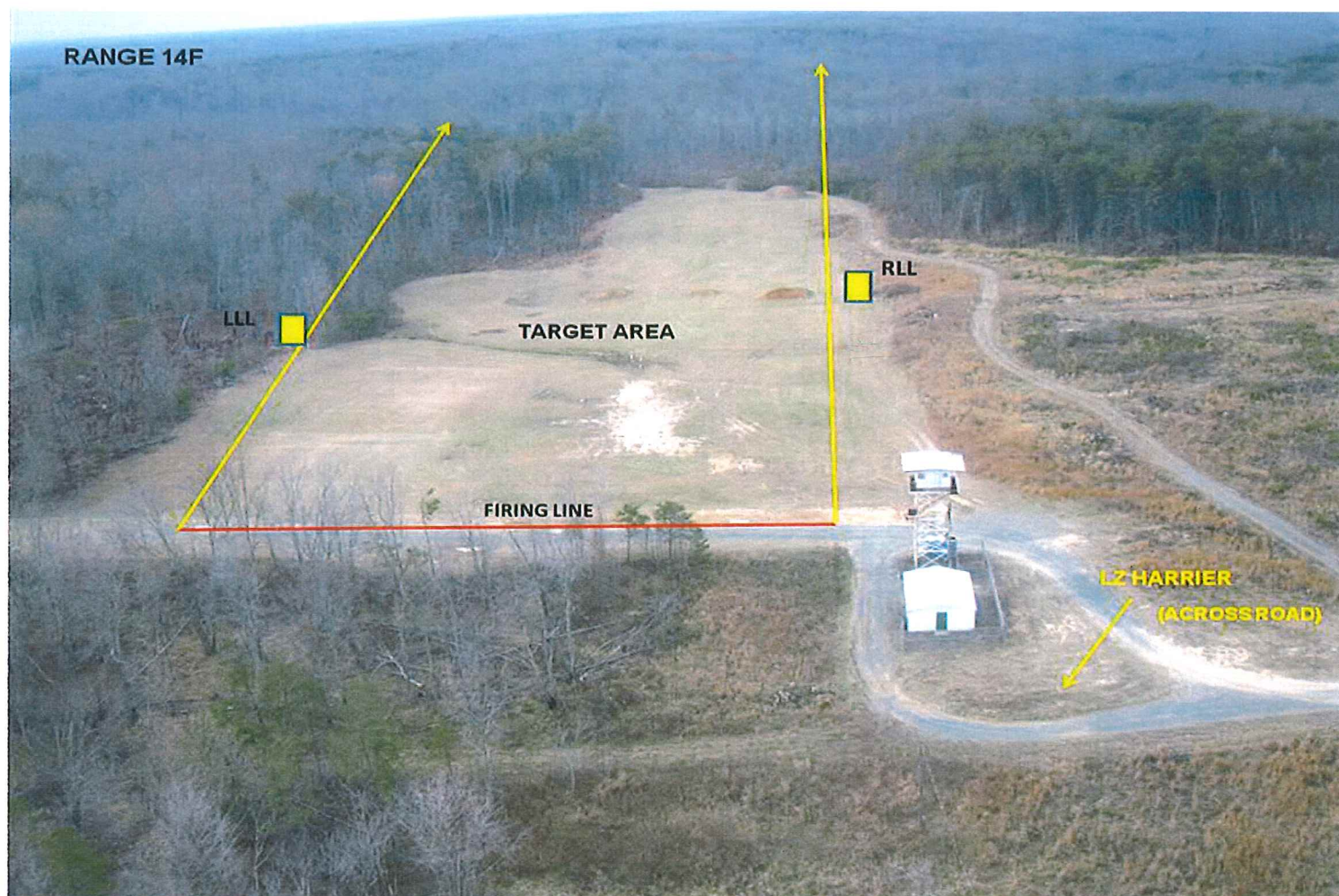
## RANGE DESCRIPTION

Range 14F is an active squad multipurpose small arms range located at Grid 87107380. It is accessible from route MCB 1.

Primary Use: Squad multipurpose small arms firing.

Alternate Uses: Live fire and Movement (100m max)

Max firing distance: 500M



**WEAPONS ACCOMMODATED**

- Service shotguns
- Service pistols
- Service rifles
- Sniper rifles
- Approved foreign weapons
- Approved pyrotechnics and illumination when fire conditions allow.
- Approved R & D weapons
- Approved automatic rifles

**AMMUNITION AUTHORIZED**

- Shotgun (All)
- Pistol (All)
- 5.56mm (All)
- 7.62mm X 51mm Ball
- 7.62mm X 51mm Special Ball (.308)
- Approved foreign ammunition
- 40mm Grenade Illum

**TARGETS/SIMULATORS/DEVICES.**

- Targets are limited to paper, wood, plastic and approved ballistic steel.
- Ballistic steel targets must be a minimum thickness of 3/8" and constructed of AR-500 or greater steel.
- Steel targets will not be engaged closer than 100m with 5.56mm or 7.62mm for targets provided by unit.
- No EPR ammunition will be fired on steel targets.**
- Contact Training Support Center (TSC) at (703)432-7026/7969 for targetry support or questions.

Minimum engagement distances for portable ballistic steel targets:

- Pistol: 7 meters
- Shotgun (buck/bird): 10 meters
- Shotgun (slug): 50 meters
- 5.56mm/.223 Ball/link: 150 meters for TSC targets  
100 meters for unit-owned targets
- 7.62mm Ball/linked: 150 meters for TSC targets  
100 meters for unit-owned targets
- 7.62mm Special Ball: 150 meters

-Approved foreign weapons ammunition

- Pistol: 7 meters
- 5.45mm: 150 meters for TSC targets  
100 meters for unit-owned targets
- 7.62mm Ball and linked: 150 meters for TSC targets  
100 meters for unit-owned targets
- 7.62mm x 54R: 150 meters for TSC targets  
100 meters for unit-owned targets

**PRIMARY DIRECTION OF FIRE:** WSW

RANGE USE RESTRICTIONS/COMMENTS:

1. Only weapons and ammunition listed in this document will be fired on this range.
2. The OIC and RSO must be present during firing.
3. All range regulations and SOP's will be strictly adhered to.
4. Ensure range flags are posted, ear protection is worn (eye protection for steel), safety brief is given, Range Control contacted and all fires are directed between the left and right lateral limits markers (black and white striped).
5. Fire and movement is authorized to 100m downrange.
6. Targets are limited to wood, paper, plastic and approved ballistic steel. No other targets will be used such as bowling pins, clay targets, cans, etc.
7. **Steel targets will not be engaged closer than 100 meters with 5.56mm or 7.62mm.**
8. All brass, trash, targetry and materials will be removed completely at the end of training by the using unit. This includes any materials used to place targets on.
9. Units that do not occupy their range within two hours of their scheduled occupy time will lose the use of that range for that day.
10. Units that have requested contractor support (i.e., automated targets, PITS targets, battlefield effects simulators, etc.) that are not present on the specified range within 1 hour of the requested time and have not contacted RMB/TSCQ will forfeit all contracted support for the day.
11. Units that have occupied a range with approved contractor support (i.e., automated targets, PITS targets, battlefield effects simulators, etc.) and that have not begun to use that support within 2 hours of the requested hour of operation will forfeit all contracted support for the day.
12. Units that are training with contractor support (i.e., automated targets, PITS targets, battlefield effects simulators, etc.) that place themselves voluntary into check fire for 2 hours during the approved support operational hours will forfeit all support for the day.
13. If battle effect simulators are to be used, the OIC and RSO will be trained in their use.

14. Units that encounter situations where contractor support (i.e., automated targets, PITS targets, battlefield effects simulators, etc.) is delayed or interrupted by circumstances beyond the control of the requesting unit (i.e., RMB directed check fire, ASP support, MEDEVAC, etc.) must contact RMB/TSCQ in order to arrange continued support within the scope of the contract and available assets.



**APPLICABLE MAP SHEET.** All grid coordinates listed in this order apply to the Quantico Military Installation Map V834S Edition 4-NIMA 1:25000.

**FACILITIES**

- Towers: 1
- Sheds: 1
- Ammo Breakdown: 1
- Parking: Yes
- Description of Other Structures: None

**UTILITIES AVAILABLE**

Electricity: Yes  
Lights: Yes  
Water System: None

**INSTALLED COMMUNICATIONS.** None

<u>Nearest MEDEVAC LZ</u>	<u>MILES</u>	<u>GRID</u>
LZ Harrier	0.1	87417379

**Directions to MEDEVAC LZ:** Exit Range 14F, turn right on MCB-1, go approximately 100ft, turn left into open field (LZ Harrier).

<u>MEASURED DISTANCES</u>	<u>MILES</u>	<u>MGRS</u>
TBS	8.0	87106390
ASP	6.0	91256605
EMT/Fire (Fire House 3)	4.7	89606410

**LASERS AUTHORIZED.** Class 1 - 4.

**AVAILABLE DAYS/HOUR** 0500-2200. All other times require airspace requests.

**AREA SUITABILITY**

<u>Unit Type</u>	<u>Unit Size</u>	<u>Number of Units</u>
Combat Arms	Squad	1

**GEOGRAPHICAL DATA**

Access Routes: MCB 1  
Soil Type: Dirt  
Terrain Type: Small rolling hills  
Vegetation: Grass/Woodland

**COMMUNICATION REQUIREMENTS:**

1. A radio check is required immediately upon occupying any portion of the RTA, every 30 minutes in a live fire status and every 3 hours in a non-live fire status.
2. The Range Control Facility (RCF) Fire Desk Net Control call sign is "Range Control". Your call sign is "Range XX" (name of range, training area or facility unit is occupying).
3. The primary RCF Fire Desk Net Control frequencies are: ELMR talk group "RC Safety" (ground) and 323.7 AM UHF (air).
4. The secondary RCF Fire Desk Net Control is telephone, numbers: 703-784-5321 or 5322.
5. OIC/RSO will monitor the RCF primary and secondary Safety Nets at all times. Instant communication is required.

6. Any unit with organic ELMR radios will have their ELMR radios programed with the "RC Safety" talk group and use those radios as their primary means of communication within the RTA.

7. Units without organic ELMR assets will be issued ELMR radios from RMB upon check-in.

8. Approved Non-ELMR radios are only authorized for internal communication (ground).

9. If the RCF cannot reach a unit within the RTA via primary communication, the unit will be contacted via the secondary means of communication.

10. Upon loss of primary communication the OIC/RSO will initiate a "check fire"/cease training status and will contact the RCF via secondary communication. This communication will be maintained while primary communication is being restored. Units may only resume firing/training once primary communication has been re-established and clearance is granted by the RCF.

#### **INJURY CLASSIFICATIONS:**

Injuries are classified into the following categories in order to aid in casualty evacuation from the RTA.

1. ROUTINE. Routine injuries are those injuries that are not threatening to life, limb or eyesight; and conditions or illnesses treatable by medication or procedures available at the base medical facilities.

2. PRIORITY. Priority injuries are those injuries that require immediate medical attention but are not threatening to life, limb, or eyesight if treated promptly.

3. URGENT. Urgent injuries are severe injuries that are threatening to life, limb, or eyesight and require immediate medical attention.

4. MASS CASUALTY. A mass casualty is a series of injuries with multiple priority and urgent medical patients.

#### **MEDICAL EVACUATION (MEDEVAC) PROCEDURES:**

1. Injury occurs.

2. Range immediately cease-fires.

3. Medical support evaluates/treats injured personnel.

4. Range OIC/RSO notifies the RCF of the injury, is the victim conscious/unconscious and what type of MEDEVAC transportation is requested (ground/air).

5. The OIC/RSO must maintain constant radio contact with Range Control and awaits further instructions.

\*Minor injuries and illnesses not requiring medical services need not be reported to the RCF but should be reported in unit training logs.

A handwritten signature in black ink, appearing to read "J. Bradley", is written over a horizontal line.

Range Control Officer

Date: 11-14-18